

Taroona Today

Ileana Timmins

*"I think that I shall never see
a poem lovely as a tree. . ."*

Joyce Kilmer's poem captures the spirit of our suburb, for to think of Taroona is to acknowledge its leafy grandeur, where nature offers compensation for the lack of manicured gardens, by displaying striking Autumnal colours and pastel Spring blooms.

Similarly, as one drives along the winding road, noticing neglected sections of nature strips, one is rewarded by the marvellous scenic river view dotted with yachts, boats and windsurfers.

A stroll around the suburb reveals older, plain homes, a reflection of yesteryear's farming and seaside evolution. These cottages are intermingled with today's modern architectural style, showing the development towards a dormitory residential area.

Most homes enjoy water views and many streets have access lanes leading to five different beaches and quiet shoreline walks.

Taroona is flanked by trees on one side which shelters the suburb from the severe westerly winds although there are times when the trees measure their strength against the sea tempest.

There is a small basic shopping centre aptly called 'TAROONA VILLAGE', as well as other conveniences such as tennis courts, a bowling green and a community centre together with a state primary and high school commended for their academic reputation, the latter having the additional privilege of a delightful water-front position.

There are families who have lived here all their lives and this strong rapport with the area is passed on to their offspring; even new residents are reluctant to leave. As a newcomer, I love the peaceful and tranquil atmosphere of the area and the walks along the Taroona beach with views of the Shot Tower, a reminder of the area's history and posterity.



Looking east across Taroona Park, 1986.

PHOTO CARL WOOD.

**Photographic Study showing the growth of the Suburb
over 40 Years, March 1946 to March 1986**



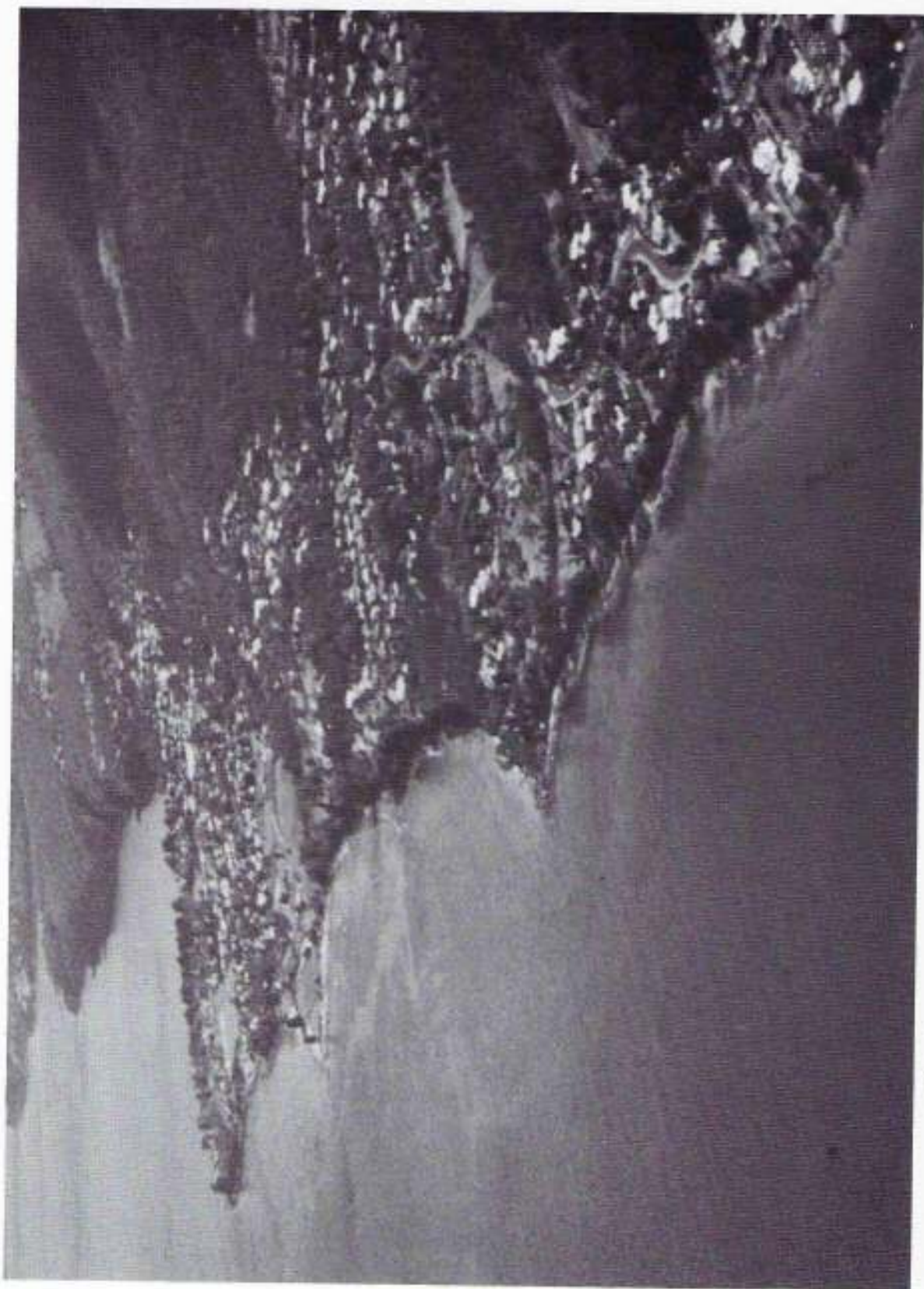
Aerial Survey from the Probation Station in the south to Winnarleigh Avenue in the north, March 1946.
PHOTO TASMAN: DEPARTMENT OF LANDS PARKS AND WILDLIFE



Aerial Survey from the Shot Tower in the south to Cartwright Creek in the north, March 1986.

PHOTO TASMAP, DEPARTMENT OF LANDS PARKS AND WILDLIFE

Aerial View, 1981



Aerial view of Tarroona, January 1981, taken through the window of a commercial aircraft.

PHOTO ANDREW LORD.