

## CHAPTER VI

### Churches

#### The Anglican Church

Len J. Bell

For many years before the existence of the Church of St. Luke in Tarooma, services of the Anglican Church were held in the area. In the early 1900s Sandy Bay, which included Tarooma, was part of the Parish of St. George's, Battery Point, and was serviced by the ministers of that church, while having its own vestry to manage its affairs.

On the 3rd July 1921 Rev. A. Gamble was appointed to the Church of St. Stephen, Sandy Bay, and in the following year St. Stephen's Parish was created. This included the Tarooma area, as it still does. Rev. Gamble was inducted as the first Rector of the Parish on the 18th June 1922. He remained in charge until 1930, when he was succeeded by Rev. R.H. Simmonds who served for some years. As Rev. Simmonds did not possess a car, Miss Ruby Perkins, who lived at "Mawhera" on the corner of Mawhera Avenue and Sandy Bay Road, drove him to Tarooma in a Morris Oxford sedan of about 1928-30 vintage. She continued to supply transport in the same car from Sandy Bay to Tarooma up to 1944, when the Rev. H. Shepherd purchased his own vehicle.

The next rector of the Parish, from January 1938 to March 1958, was the Rev. H. Shepherd. From July 1940 to November 1943 he was given leave of absence to serve overseas as an Army Chaplain. During his absence the Rev. G.J. Baxter, followed by Rev. L.F. Benjafield, acted as *locum tenens*. At the end of March 1958 Rev. H. Shepherd departed for Victoria. He was replaced by Rev. H.A. Jerrim who took his first service in St. Luke's on the 4th May 1958.

At the end of 1961 Rev. H. A. Jerrim transferred to St. John's, Launceston, and his place was taken by Canon H.C. Cuthbertson who took his first service at St. Luke's on the 3rd December 1961. In 1964 Rev. Cuthbertson had been ill for some time, and having recovered sufficiently, went to South Australia to recuperate, where he died in a motor accident.

A Memorial Service was held in St. David's

Cathedral on the 16th November. During the ensuing five months the Curate, Rev. R. Kellam, was responsible for the running of the Parish under the guidance of Archdeacon MacDonald.

In March 1965 Rev. G.N.B. Lennard was inducted to the Parish. Towards the end of 1981 Rev. Lennard, who had been unwell for sometime, became worse and had to be relieved of some duties. Services were taken by Rev. M. Webber and Rev. H. Hadrill, who had for several years previously taken services on a casual basis as required. Rev. Lennard retired early in 1982 and Rev. Webber looked after the Parish until an appointment was made.

The new Rector, Rev. R. Carnaby was inducted at St. Stephen's on the 29th April 1982. In December 1985 Rev. Carnaby took study leave until September 1986. During his absence Rev. T. Hayman acted as *locum tenens*. The Rev. R. Carnaby is still Rector at the time of publication.

#### Curates

The Rev. Jerrim saw the need for an assistant Curate in the Parish and the first to be appointed was the Rev. J. Hope who took his first service in St. Luke's on the 28th January 1959. We said farewell to him at Evensong on the 19th February 1961. His place was immediately taken by the Rev. R. Dixon. In February 1962 Rev. Dixon left and the Rev. A. Solomon became Curate. He also only stayed twelve months, then was appointed to the Parish of Avoca in 1963. For that year his replacement was the Rev. D. Pryde.

1964 was notable as on the 16th February we welcomed our first Honorary Deacon, the Rev. G.R. Lennox, who stayed until the 27th November 1966. Also in February our new Curate, the Rev. R. Kellam, joined the staff and stayed until the 6th February 1966. He took up residence in Tarooma and married a local girl, Miss Valerie Volk, who was a member of St. Luke's congregation. He was followed on the 18th September 1966 by the Rev. B.A. Rayner who stayed until January 1967. The Rev. T.E. Henricks, who was to be our last full time assistant, came on the 26th

## Churches

February 1967 and stayed until 1971, when he was appointed to a northern parish. Although there have been several occasions since that time when the employment of a full time assistant has been considered, regrettably none came to fruition.

### Venue of Early Services

The first church services were held in the Old Public Hall, which was shared by the various congregations on a roster system. This roster occasionally broke down, once resulting in one congregation waiting outside for a service already in progress to end. Organists at the time included Mr Ford and Mr Arvin Roberts. Sometimes, when the hall was not available, services were held in private homes and on Christmas Day, 1949, a large congregation gathered at the home of Isobel and Pat Geeves in Jenkins Street for Holy Communion. The Rector, the Rev. H. Shepherd officiated.

Services continued to be held in the Old Hall until 1948 when the Presbyterian congregation built their first church at 1 Tarooma Crescent and made the building available to the Church of England for morning and evening services on alternate Sundays.

### Building of St. Luke's Church Hall

Before 1938 John Blakemore Roe owned the

piece of land on which St. Luke's Church now stands. He agreed to sell this to Rev. A. Gamble for £120, of which the Rev. Gamble had paid the sum of £67 4s. on account of the purchase money<sup>1</sup>. Rev. Gamble later sold his interest in the property to George Augustus and Faith Hensby (sic) for £50. On the 15th September 1938 Mr and Mrs Hensby (sic) purchased the remainder of the property from John Blakemore Roe for the outstanding sum of £52 16s. The Hensbys (sic) retained the property until the 21st August 1941 when they sold it to the Trustees of the Property of the Church of England in Tasmania for £150<sup>2</sup>.

The area of the land was 1 rood, 21 7/10 perches and was lot 25 on the subdivision plan of the Tarooma Park Estate, dated the 3rd October 1923 made by Charles Kingston Goddard, authorised surveyor. This land was originally part of the location order to Jacob Bellette in 1813.

About 1950 a committee was formed to work towards the construction of a church hall on the present site. It was decided that the building would be a hall, which would also be used as a church until a proper church could be built. Early in 1956 work was begun on the building.

# Tarooma Park Estate

is situated at Tarooma, 6 miles from Hobart, on the Brown's River Rd.

It is an Ideal Little Suburb and has a Fine Beach which is only a few minutes' walk from the Estate which is being offered at Public Auction on

**Saturday, January 27th, at 3 p.m.**

Plans and Particulars from Co-Operative Estates Ltd.  
78 COLLINS STREET

Max Moore,  
Auctioneer

Gordon Murchison,  
Sales Manager

*Newspaper advertisement advertising sale of Tarooma Park Estate, of which St. Luke's is now part and stands on lot number 25.*

"THE CRITIC", 27 JANUARY 1923.



The contractor was Charles (Buddy), Viney, a local builder and a member of the congregation. The hall and sanctuary were dedicated by Dr. G.F. Cranswick, Bishop of Tasmania, on the 17th June 1956. He was assisted by the rector, the Rev. H. Shepherd. The sanctuary was then at the western end of the building, being part of the present stage area and between services was closed off by a pair of massive metal doors.

Before long the hall became popular with community organisations, which made good use of it for functions. It proved to be an incentive for the formation of church groups. It remained a focal point in the community until the opening of the new Community Hall. In 1958 the block of land on the northern side of the church was owned by Miss W.M. Lowson of Perth, West Australia, who wished to retain it as open space and did not want to sell.

However the Rev. H. Shepherd saw the desirability of the Church owning the property and so his step-daughter, Miss V. Dove, who was living in West Australia, negotiated with Miss Lowson on the Church's behalf<sup>3</sup>. The property, containing 3 roods and 3 perches was

finally purchased on the 14th March 1958 by the Trustees of the Property of the Church of England in Tasmania for the sum of £1,000<sup>4</sup>.

For a period during 1957-58 the Health Department had use of the small room which was then used as a vestry. This room served as a surgery for the District Medical Officer on his weekly visits. In 1960 the hall was let to the Education Department at £5 per week while a second room was added to the State Primary School next door.

In June 1961 a tender of £921 was accepted from Bridge and Freeman to erect a room on the southern side of the building, to be used as a vestry and Sunday school. This room was dedicated on the 29th October.

The only entry to the church grounds was from the Channel Highway, where there is now a concrete walkway. Leaving in his car one evening, the late Mr Harold Heyward was involved in a collision in which his car was heavily damaged. He escaped shaken, but relatively unhurt. As a result of this the vestry arranged with the Education Department for access through its property from Coolamon Road. This new access was constructed by Hazell Brothers in May 1962, at a cost of £222.



*East end of St. Luke's Church Hall, 1965-66.*

PHOTO LEN BELL.



## Churches

In June 1964 the first drawings for a proposed church building were received from the architect, Mr H. Oldmeadow. Many more plans were to be viewed before the project had to be shelved because finance was not obtainable. Under the circumstances at the time, if the plans could have gone ahead, the cost would have been approximately £16,927.

The building did not escape unscathed during the 1967 bushfires. The main building was saved but the timber toilets attached to the rear wall were destroyed. As a result of the fires several organisations which lost their venues were granted use of the hall. These included the District Medical Officer, Boy Scout Troop and Adult Education Classes. The fire damage was repaired by June, the contractor being Mr B. Denne.

At the beginning of 1967 it was obvious that a church building was financially out of reach. Discussions began about altering the existing hall to make it a more fitting place of worship. Three members of the congregation, Mr Allan Floyd, Mr Reg Gee and Mr Harold Newton, put their skills together and submitted some sketches for discussion. Something of a record was created when the vestry agreed on a design only one month later. Beltana builders quo-

tation of \$4,988 for the alteration of the building was accepted in April 1968 and soon a temporary wall appeared at the eastern end to block off the hall while demolition and construction commenced.

The new sanctuary was dedicated on the 30th March 1969 by Bishop G.F. Cranswick. Its total cost was \$5,348. Planning began immediately to install pews in place of the tied groups of chairs which had been previously used. A simple design was agreed upon and these were supplied by D. Williams Joinery at a cost of \$72 each. The kneelers to go with them were supplied by the firm J.F. Allen for \$6.15 each.

### Notable Events

Looking at the old records some occasions worthy of note may be found. On the 27th January 1952 a service of Evensong was taken by Mr Richard Lord, Lay Reader, who is still resident in Tarooma and attends St. Luke's. On the 15th March 1953 Mr Harold Heyward, Lay Reader, took his first service in the Parish. Mr Heyward died on the 13th August 1966.

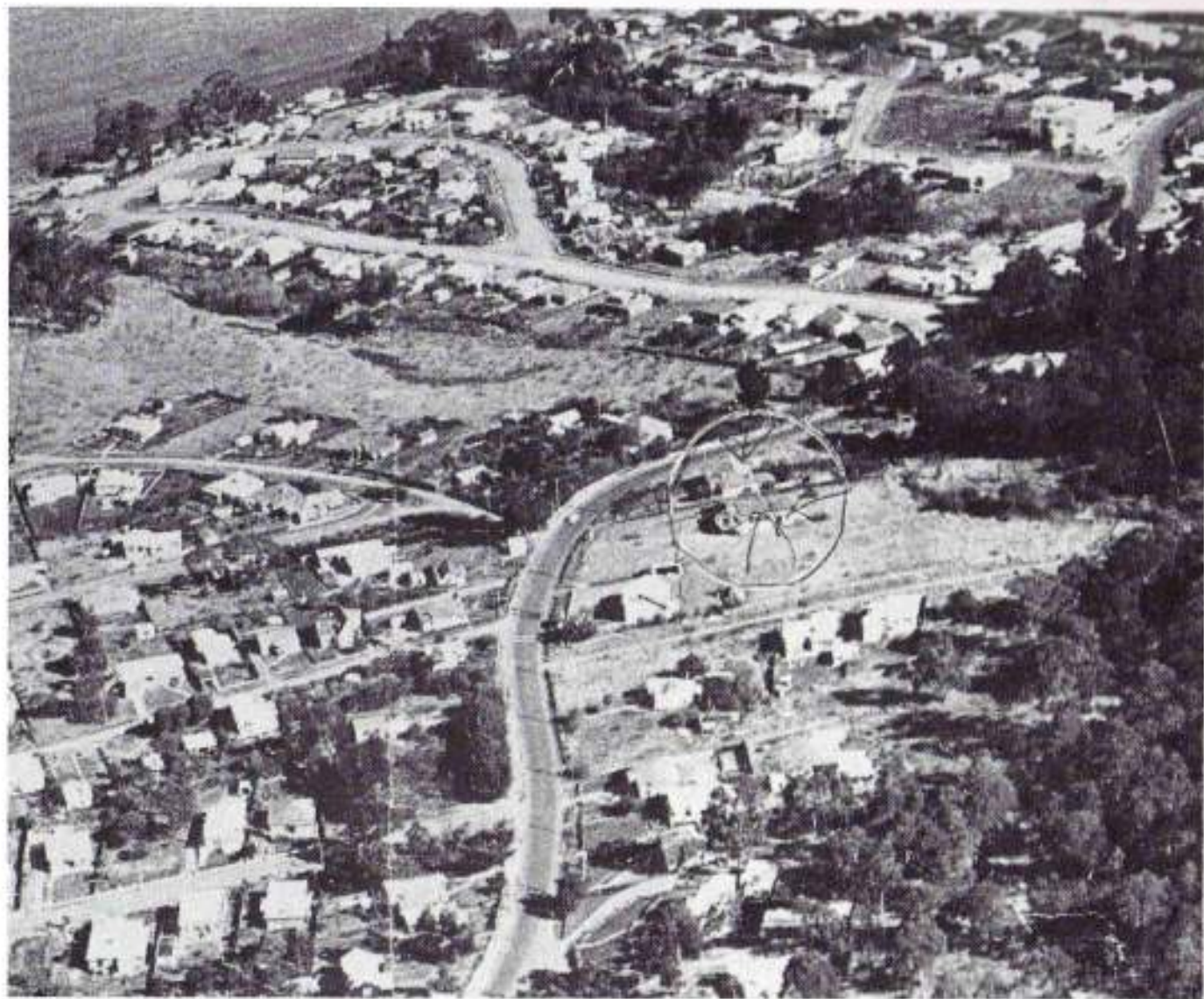
The first service of Confirmation recorded, took place on the 18th July 1954, conducted by Bishop Cranswick.



*Stage and Sanctuary in the west end of St. Luke's Church Hall, 1957.*

PHOTOGRAPHER UNKNOWN, LENT BY THE CHURCHWARDENS OF ST. LUKE'S CHURCH.





*St. Luke's Church Hall (circled) shortly after completion, 1957.*

PHOTOGRAPHER UNKNOWN, LENT BY THE CHURCHWARDENS OF ST. LUKE'S CHURCH.



## Churches

On Good Friday in 1955 the first United Service was held in the Presbyterian Church in Taroona Crescent. The service was conducted by the Rev. C.Y. Reid, Presbyterian, the Rev. R. Collis, Methodist, and the Rev. H. Shepherd, Church of England.

The first wedding was solemnised in St. Luke's on the 26th April 1957 when Ann Mercy Gilley and Leo Grey were married by the Rev. H. Shepherd.

On the 26th September 1958 the first St. Luke's Annual Ball was held. These were popular functions for some years, with an admission price of 7s6d. per head, supper included.

The Parish Council was inaugurated on the 12th February 1959. Prior to this St. Stephen's and St. Luke's were separate entities, having little contact between the two congregations, and none between the vestries. The Rector chaired meetings at both vestries, but that was the limit of contact. The formation of the Council changed this situation. Each vestry has equal representation on the Parish Council which makes decisions affecting the whole Parish.

In April 1959, at the urging of Mrs Eve

Haigh who was very active in church matters, the Women's Guild was formed and Eve became its first President.

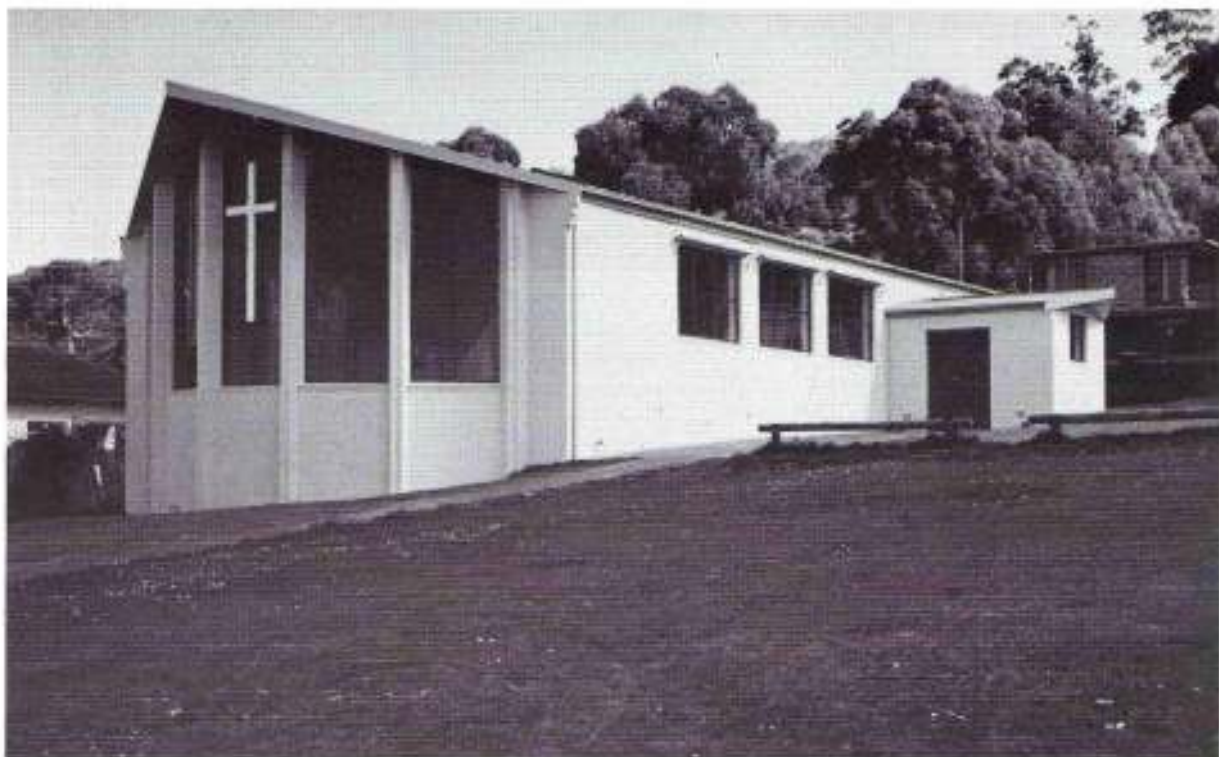
On the Sunday before Christmas in 1970 a service of Carols and Lessons was held in which all local churches were invited to participate. It was well attended and became an annual event. In later years this service was conducted at the different churches in rotation, and is now held in the new Community Hall.

In 1984 the practice of holding a combined service of both St. Stephen's and St. Luke's congregations was begun. This has continued to be held in the months having a fifth Sunday.

The first Parish Barbecue was held in the grounds of St. Luke's after a service of evensong on the 17th March 1976. It was a successful attempt to improve fellowship opportunities between the members of the two centres of the Parish and has continued on an annual basis.

### Church Activities

In 1957 a strong Sunday School was being held and was still operating in 1971, after which time it went into recess. When the Rev. R. Carnaby became Rector in 1982 the possibility



*East end of St. Luke's Church Hall, 1986.*

PHOTO ANDREW LORD

was discussed of having a Sunday School again, but difficulties of space were foreseen.

Some of the young mothers of the congregation decided to have a children's club on a week day, to be run on the lines of a Sunday School. As a result the Thursday Club began activities in March 1983 and is still flourishing.

Over the years the Guild has supported the church financially, both within the Parish and outside it. In the 1960s the Annual Fair was started by the Guild. For some years it was run by the ladies alone, but now the whole congregation is involved. The Fair was originally held on a Saturday morning, but after many years it was changed to a Friday evening. Food stalls and barbecues were

added, and it became the Twilight Fair.

In June 1966, at the suggestion of Mrs Erna Brigg, the Guild set about organising a sale of secondhand books, with assistance from members of the congregation. Initially the funds were donated to the Clarendon Children's Home, but for some years now proceeds have been equally divided between the Clarendon and Glenview Homes. These sales have proved very successful and have continued as an annual event.

#### References

1. DO, 20/4881.
2. DO, 21/5153.
3. R. Lord, verbal history.
4. DO, 30/8899.



*The new Sanctuary in the east end of St. Luke's Church Hall, 1986.*

PHOTO RICHARD VERRALL