

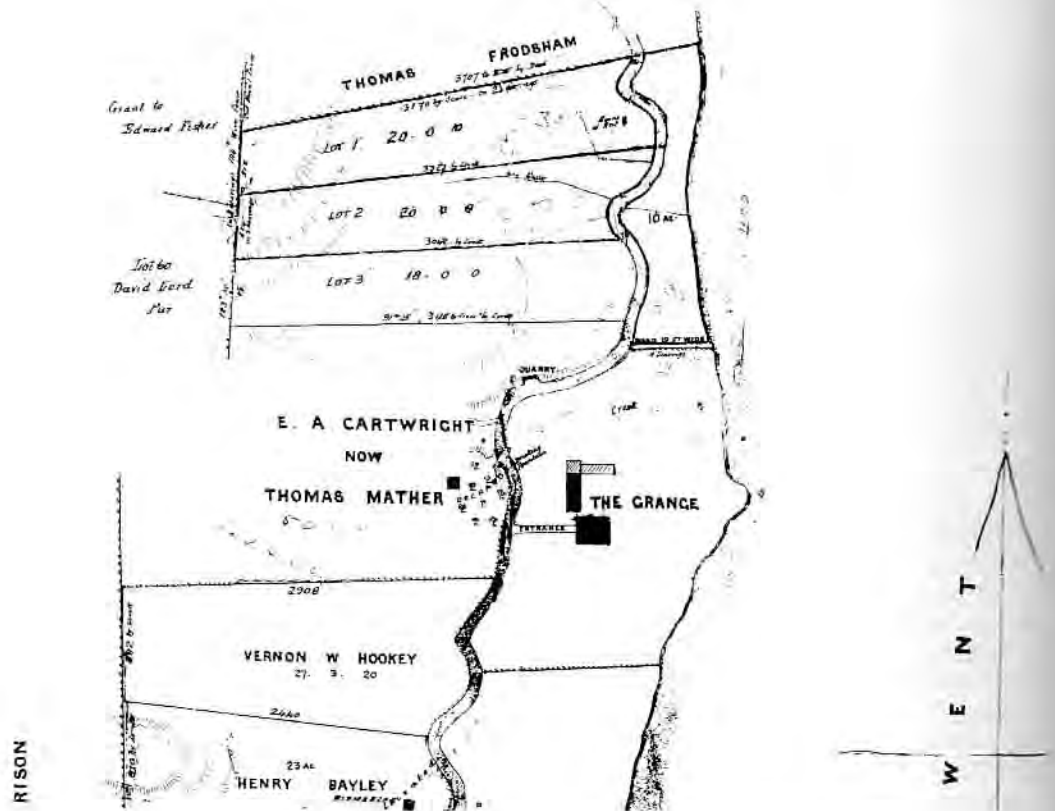
Plan of part of Cartwright's Estate
[Originally drawn between 1885-1891]

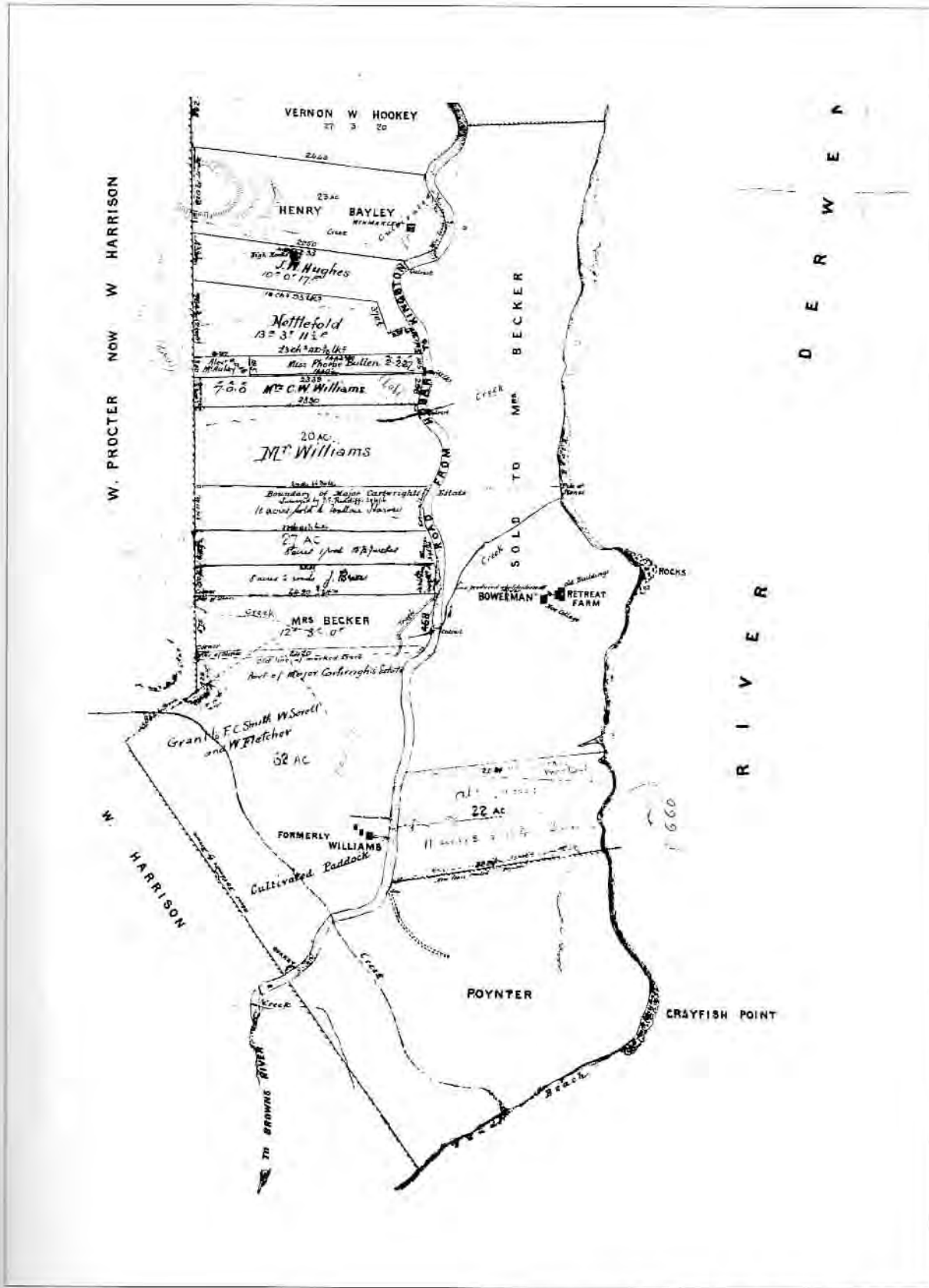
PLAN OF PART OF
CARTWRIGHTS ESTATE.

ON BROWNS RIVER ROAD

FOR SALE BY PRIVATE CONTRACT

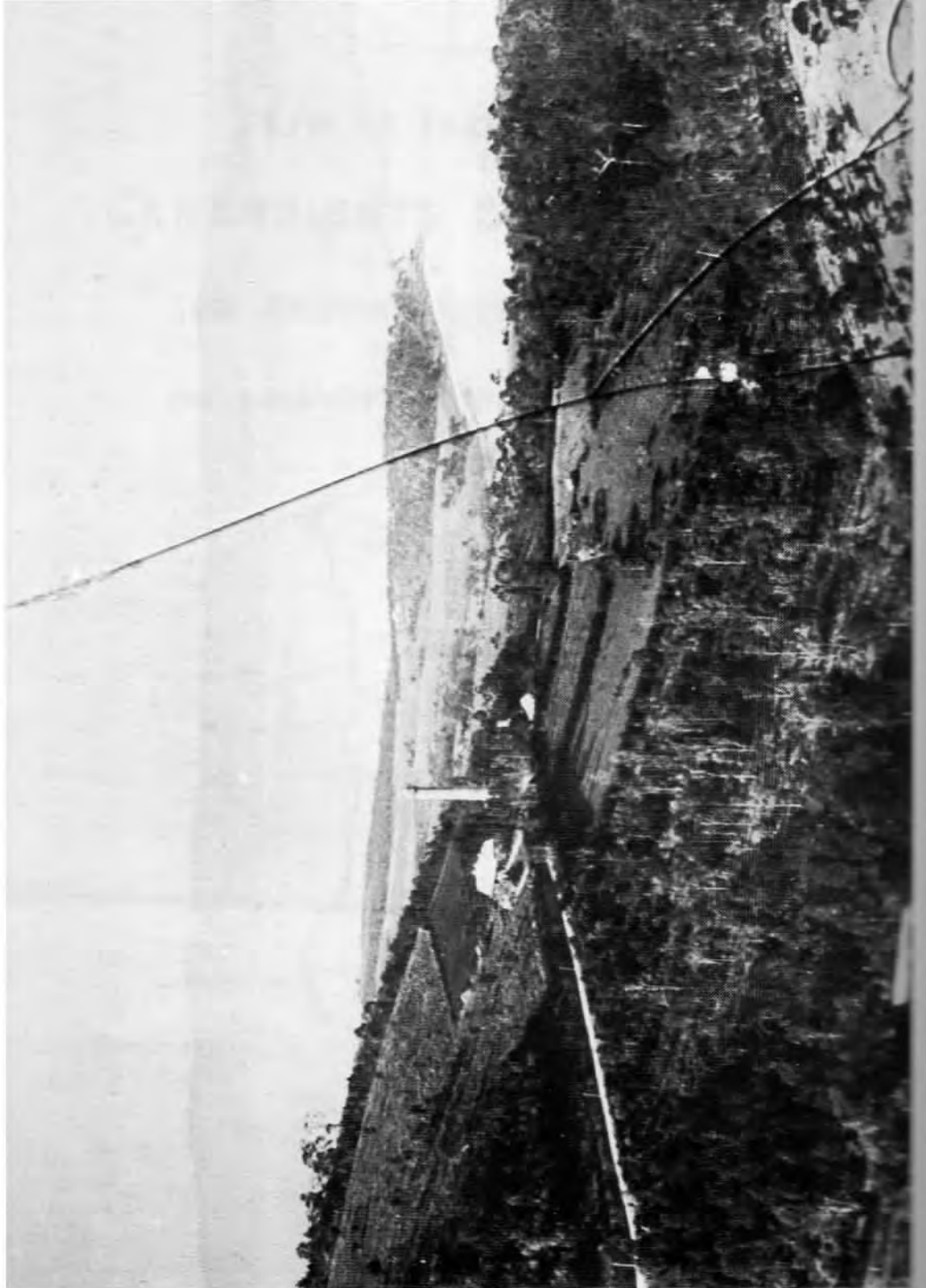
Scale: 6 chains to an inch





UNREGISTERED ROLL PLAN No. 36. PRINTED WITH THE PERMISSION OF THE SURVEYOR-GENERAL, DEPARTMENT OF LANDS, PARKS & WILDLIFE.

**Photographic Study showing the growth
of the Suburb over 106 Years, 1880-1986.**



The shot taken with Cayfish Point in mid-background, c1880, from a glass plate negative.



The Shot Tower with Crayfish Point in mid-background, 1986.

PHOTO J.C.S. BOWLER.

Nineteenth Century



Brown's River Road and Shot Tower



Brown's River Road

Two postcards c1893 highlighting the popular scenic drive around the turn of the century.