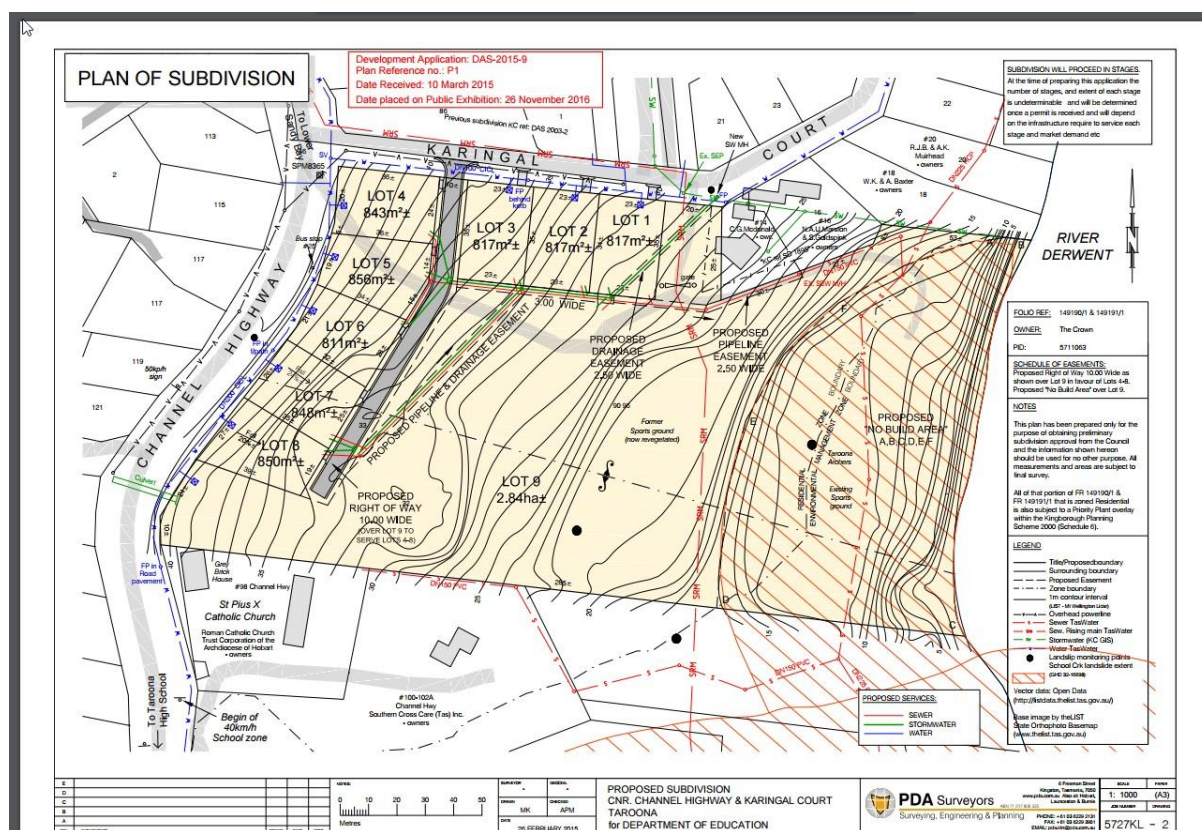


TAROONA SCHOOL PARKLAND PROPOSED FOR SUBDIVISION

Did you know that the State Government is proposing to subdivide the Tarooma Primary and High School parkland?

A planning application has been advertised for a nine lot subdivision - eight residential lots will directly border Karingal Court and Channel Highway with a road coming off Karingal Court. A larger ninth lot will be located in the middle and the foreshore balance will remain undeveloped.

Residents have only until 9 December to lodge a representation with Kingborough Council.



The Tarooma Community Association (TCA) is concerned about the State Government's lack of community engagement in proposing to develop, subdivide and sell off the reserve to make money.

The community has used this area as a public reserve for many decades since the schools development. The area provides important

- habitat for native flora, birds and animals.
- recreational and open space connection, linking the highway to the Derwent River foreshore.
- outdoor classroom and educational resource for the students of Tarooma Primary and High Schools.

As it is Crown Land the community has a right to have input to its future use.

WHAT CAN YOU DO?

Come to the community walk on site 11am, Sunday, 4 December to learn more.

Meet corner Karingal Court and Channel Highway.

If you are concerned please write to the Tasmanian Government Minister for Education Jeremy Rockcliffe, Minister for Crown Lands, Matthew Groom and other local members to let them know your concerns.

- *Demand that the planning application be put on hold to allow constructive engagement with the Tarooma community about future use of this land*
- *Contact local Kingborough Councillors to voice your concerns*
- *Go to the Tarooma Community website Tarooma.tas.au for further information*

Act now as we have little time